

# How To Insulate Your Home

---

To Stay Cooler In Summer and Warmer In Winter



## MultifoilsDirect

Experts in Foil Insulation Solutions

# Under Rafter / Pitched Roofs



## Why You Should Insulate Below Your Rafters?

Are you here to satisfy building control standards during a loft conversion? Or is it to improve the current insulation in your cold, drafty loft? Whatever the reason, when considering insulating it is crucial to ensure that your pitched roof is well insulated to conserve energy, given that heat rises and therefore your roof is a major source of heat loss.



## Fixing Instructions:

See Page 12 (Point a)

## What Product Should I Use?

We have two viable products which we would recommend for installing underneath your roof rafters. First is EcoQuilt Expert. This product is around 15mm thick in its open state and will compress to just 5mm thick. When installed this is equivalent to around 50mm or Rigid Board such as Kingspan or Celotex.

Secondly is our SuperQuilt Insulation. This is the highest performing Multifoil on the market which boasts True Aluminium foil at the outer layers - Reflecting 98% of radiant energy! This is also BBA, BDA and LABC certified for use with Building Control. At 40mm thick this will compress to just 7mm and is equivalent to over 75mm of Rigid Board such as Kingspan.

## Key Benefits / Properties

- Fast, Cost Effective & Easy to Install
- Eliminates The Need of PIR or Wool
- No Floating Fibres / Non Itchy
- Prevents Condensation
- Built In Vapour Control Layer
- Saves on Vital Head Height
- Doesn't Dissipate Over Time
- UK Manufactured

# Over Rafter / Pitched Roofs



## Why You Should Insulate Above Your Rafters

Insulating Roofs can look quite tedious and expensive, however this area is the most vital to insulate as heat rises upwards.

Most older homes were fitted without a membrane or built using a non-breather felt which is outdated and can cause a build up of condensation within your loft.



## Fixing Instructions:

See Page 12 (Point b)

## BreatherQuilt Insulation For Over Rafters

BreatherQuilt offers a high level of thermal performance whilst replacing the need for a stand-alone breather membrane.

Its breathability eliminates condensation and its flexibility along with the new built in double sided tape makes the installation process easy.



## Key Benefits / Properties

- BDA Kiwa & NHBC Approved
- Equivalent to over 50mm of PIR
- 2 in 1 Breather Felt & Insulation
- Prevents Condensation
- Built In Double Sided Tape
- No Floating Fibres
- Doesn't Dissipate Over Time
- UK Manufactured

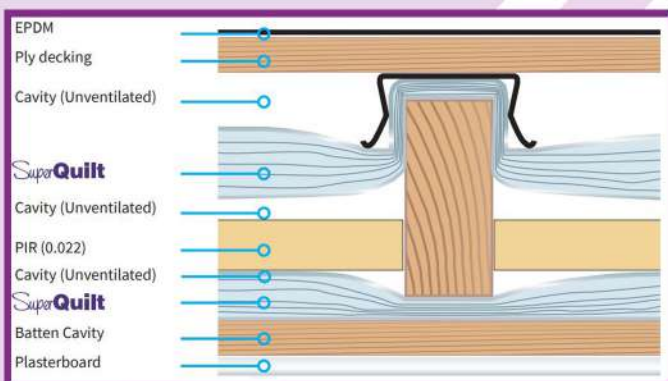
# Flat Roofs



## Why you should always have an Insulated Flat Roof

Insulating Flat Roofs prevents rising heat through the roof being lost. Insulating this application with a Multifoil Insulation will help reflect heat back into your home, saving on energy bills all year round.

Commonly in refurbishments you will be insulating to the underside of the joists, meaning it will be classed as Cold Roof detail.

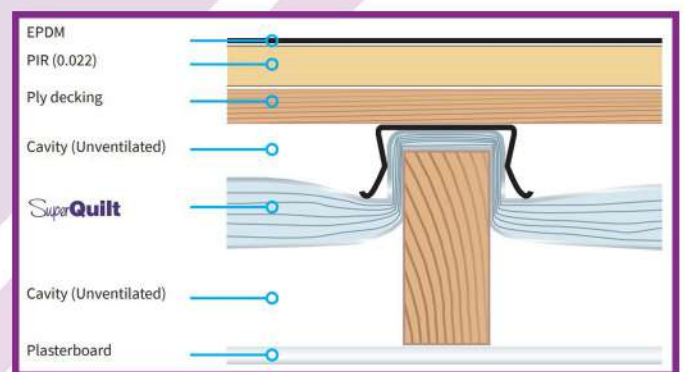


## Fixing Instructions:

See Page 12 (Point c)

## SuperQuilt For Flat Roofs

Irrespective of whether you are required to insulate under or over joists, SuperQuilt will be able to satisfy Building Control and is BDA and LABC certified for flat roofs. Made up of 19 separate layers, true aluminium foil and wadding this product is equivalent to over 75mm of rigid board insulation while only being 7mm when compressed.



## Key Benefits / Properties

- BDA KIWA & LABC Certified
- Thin, Flexible & Easy to Install
- Ideal for Meeting U-Values
- True Aluminium Foil Outer Layers
- Reflects 98% Of Radiant Energy
- Equivalent to over 75mm of PIR
- Reflects Heat Back into Your Home
- UK Manufactured

# Conservatory Roofs



## Is your Conservatory too Cold in Winter and too Warm in Summer?

Do you tend to close off your conservatory in the winter, because its just too cold? Do you close it off again in the peak of summer, because it is just unbearably hot? By insulating your conservatory roof, you would be able to use your conservatory all year round, as 98% of radiant energy will be retained!



## Fixing Instructions:

See Page 12 (Point d)

## Easy To Install Conservatory Insulation Kit

Our Conservatory Insulation Kit contains everything you'll need to professionally insulate your conservatory at trade prices! We offer either EcoQuilt Expert or YBS SuperQuilt in our DIY / Trade Insulation Kits. These high performing multifoils will revive your unusable conservatory for use all year round!



## Key Benefits / Properties

- Lightweight, Thin and Flexible
- High Performing Multifoil's
- 2 in 1 VCL and Insulation
- Prevents Condensation
- Saves on Heating Bills
- Warmer in Winter, Cooler in Summer
- Revives Unusable Conservatory
- UK Manufactured

# Solid Walls



## Why It's Important to Insulate Solid Brick Walls

Insulating brick or block walls can be just as important as insulating a loft. Solid walls (no cavity) tend to have zero insulation. This means there is an opportunity to save significant costs on an annual basis by insulating your walls with reflecting multifoil insulation products.



### Fixing Instructions:

See Page 12 (Point e)

## EcoQuilt Expert or YBS SuperQuilt

We would recommend using either SuperQuilt or EcoQuilt for insulating your solid walls. EcoQuilt is the best value Multifoil on the market when comparing cost vs performance. EcoQuilt is 15mm thick and has 6 layers. SuperQuilt would be the product to use if the project is going through building control or an even higher level of performance is required.



## Key Benefits / Properties

- Save approx £435 per year in energy bills
- 2-in-1 Insulating Vapour Barrier
- Thin, Flexible and easy to Install
- Outperforms 75mm of PIR Insulation
- Itch free, contains no harmful fibres
- Simply roll out & staple, minimal waste
- UK Manufactured

# Timber Frame Walls



## Why Insulate Stud / Timber Framed Walls?

Timber Frame Wall constructions have become one of the most widely used methods in the UK today. Advantages include the ability to pre-engineer in a factory, quicker construction time and sustainability of the raw material. Timber Frame walls tend to provide better insulation performance compared to a masonry wall of a similar thickness.

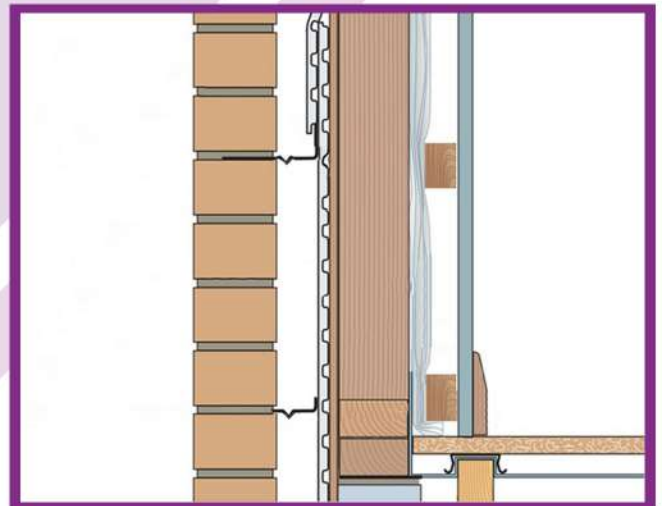


## Fixing Instructions:

See Page 12 (Point f)

## Multifoil Timber Frame Insulation Kit

We would recommend our Multifoil Timber Frame Kit. Our kit contains two high performing foil-insulation products as a system. SuperQuilt is to be installed on the internal of the stud, before proceeding with a batten cavity and plasterboard. BreatherFoil FR is to be installed on the external of the plywood, before proceeding with a cavity and your choice of external finish.



## Key Benefits / Properties

- Both products certified by BDA
- 2-in-1 Insulating Vapour Control Layer
- 2-in-1 Insulating Breather Membrane
- Will achieve 0.25 U-value
- Thin, Flexible and easy to cut
- Can be used on stud depth of 50mm
- Itch free, no harmful or floating fibres
- Simply roll out & staple, minimal waste
- UK Manufactured

# Wooden & Concrete Floors



## Why Is It Important to Insulate Your Floors?

In most homes built pre 1960 little to no floor insulation was commonly installed within floors, thus creating a channel for cold air to rise into your home.

Nowadays insulating floors would possibly be the most vital place to insulate as we know that cold drafts can easily be prevented.



## Fixing Instructions:

See Page 12 (Point g)

## EcoTec Floor-Foam Insulation Kit

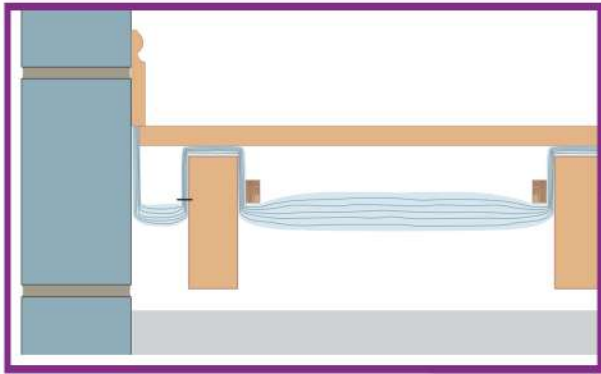
This highly reflective True Aluminium Foil Insulation is only 4mm thick, so won't raise your floor height. EcoTec Floor-Foam can be installed directly underneath your Carpet, Laminate, Wooden or Vinyl Flooring! Most importantly EcoTec Floor-Foam can be stapled directly to wooden floors or sealing to concrete floors using a non-solvent adhesive!



## Key Benefits / Properties

- UK Manufactured
- Prevents Cold Rising
- Reflects Warmth Back
- Eliminates Moisture
- Only 4mm Thick
- 1 roll covers 30m<sup>2</sup>
- Supplied with Free ThermaSeal Foil Tape

# Suspended Timber Floors



## Why Is It Important to Insulate Your Floors?

Uninsulated Floors can be the root cause of cold rooms. As little to no insulation was installed at the time of construction. Drafts and moisture penetrate the floorboards, resulting in uncomfortable living areas. That's why it is vital to insulate beneath them.

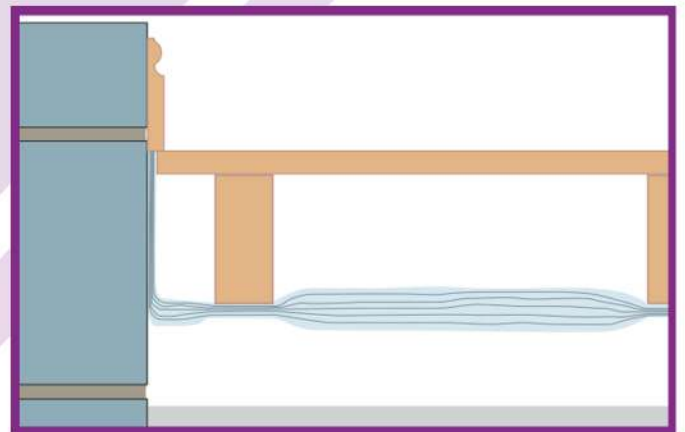


## Fixing Instructions:

See Page 13 (Point h)

## EcoQuilt Expert Multifoil Insulation

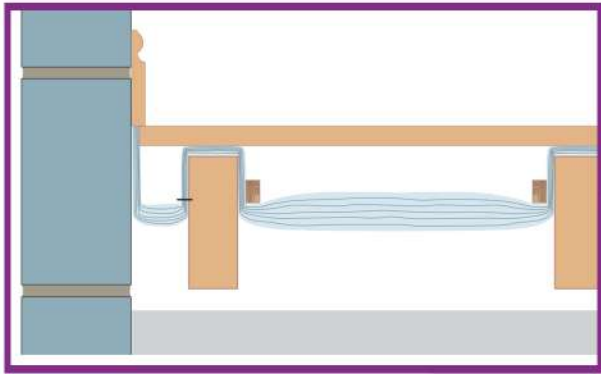
EcoQuilt Expert is a 6 layer Multifoil Insulation blanket which is around 15mm thick in its open state. This will compress to just 5mm when installed. EcoQuilt Expert is designed to have an air cavity either side (as shown in the pic on the left), as this air cavity helps the foil to reflect and prevents cold bridging.



## Key Benefits / Properties

- UK Manufactured
- Prevents Cold Rising
- Reflects Warmth Back
- Eliminates Moisture
- Only 4mm Thick
- 1 roll covers 30m<sup>2</sup>
- Supplied with Free
- ThermaSeal Foil Tape

# Suspended Timber Floors



## Why Is It Important to Insulate Your Floors?

Uninsulated Floors can be the root cause of cold rooms. As little to no insulation was installed at the time of construction. Drafts and moisture penetrate the floorboards, resulting in uncomfortable living areas. That's why it is vital to insulate beneath them.

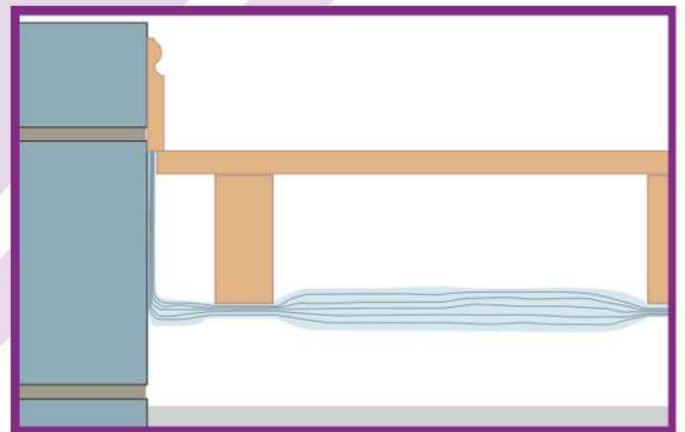


## Fixing Instructions:

See Page 13 (Point h)

## EcoQuilt Expert Multifoil Insulation

EcoQuilt Expert is a 6 layer Multifoil Insulation blanket which is around 15mm thick in its open state. This will compress to just 5mm when installed. EcoQuilt Expert is designed to have an air cavity either side (as shown in the pic on the left), as this air cavity helps the foil to reflect and prevents cold bridging.



## Key Benefits / Properties

- UK Manufactured
- Prevents Cold Rising
- Reflects Warmth Back
- Eliminates Moisture
- Only 15mm Thick
- R-Value of up to 2.27 m<sup>2</sup>K/W
- Compresses to only 6mm
- Flexible and Easy to Install

# Timber Garden Buildings



## Why is it vital to insulate a Shed or Summerhouse?

You Insulate your home but not your timber building? Why? It is as vital to insulate your shed or summerhouse as it is your home, this will create an external living space for use all year round. Which will also protect goods against frost and damp.



## Fixing Instructions:

See Page 13 (Point i)

## EcoTec Shed Kit or EcoPro Shed Kit?

EcoTec is only 4mm thick yet is equivalent to over 50mm of Polystyrene, whereas EcoPro is only 6mm (when compressed) and is equivalent to over 75mm of Polystyrene. Both products act as High Performing Vapour Control Layers, eliminating condensation and come in a kit which includes everything you'll need!



## Key Benefits / Properties

- Built in Vapour Control Layer
- Thin, Flexible & Easy to Install
- Ideal For Roofs, Walls and Floor
- All Fixing Equipment Included
- Reflects 96% Of Radiant Energy
- Reflects Unwanted Cold Away
- Retains an Ambient Temperature
- UK Manufactured

# Caravans and Motorhomes



## Why Insulate your Caravan or Motorhome Floors?

It is common to self-insulate Caravans and Motorhomes, as generally caravans are built with minimal or no underfloor insulation. So are susceptible to being uncomfortably cold during the winter & too hot during the summer. Insulating underneath your static caravan or motorhome will enable you to maximise its usage all year round without having to pull up any floorboards.

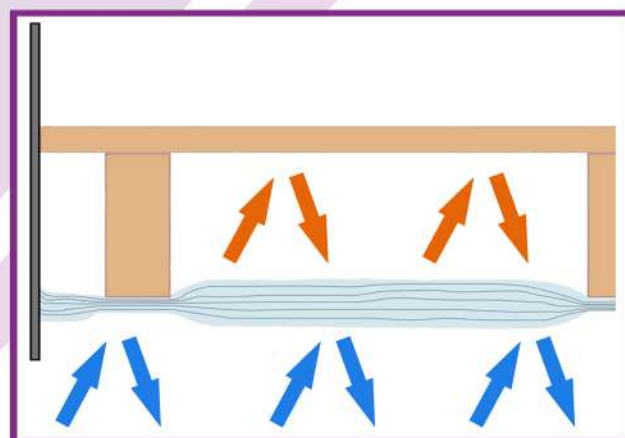


### Fixing Instructions:

See Page 13 (Point j)

## Caravan Insulation Kit

The insulation within this kit consists of 6 layers which compress to just 6mm thick. The outer layers are made of highly reflective foil which reflect 96% of radiant energy. We recommend fixing one layer of insulation to the underside of the caravans joists. The high performing Kit also includes all the fitting equipment required to install the product.



## Key Benefits / Properties

- UK Manufactured
- Prevents Cold Rising
- Reflects Warmth Back
- Contains all fitting items
- Only 6mm Thick installed
- Suitable for all Caravans
- Creates warm living space all year round

# Radiators and Convectors



## Why Is It Important To Insulate Behind Radiators?

Many people opt to insulate behind their radiators as it is quick and simple yet generates instant energy savings. It makes sense to insulate behind your radiators to ensure that the energy you are purchasing is reflected into the room, opposed to being lost instantaneously via the walls.



## Fixing Instructions:

See Page 13 (Point k)

## Radiator Insulation Kit

This Kit comes with enough insulation to cover all the radiators in an average house. The insulation used in this kit – EcoAirtec Double has an air bubble membrane, with True Aluminium Foil on either side. The Insulation is only 4mm so fits comfortably behind common house radiators and is very easy to install. Despite its shallow depth it is equivalent to around 55mm of Polystyrene and reflects 95% of radiant energy.



## Key Benefits / Properties

- Simple to Install
- Foam Insulation Tape Included
- UK Manufactured
- True Aluminium Foil Either Side
- Only 4mm in Thickness
- Reflects 95% of Radiant Energy
- Low Cost & Instant Energy Saving
- Maximizes Radiator Performance

# SuperQuilt

**Multifoilsdirect.co.uk are experts in High Performance Reflective Multifoil Insulation Solutions for 100's of applications such as Roofs, Walls, Floors, Conservatories, Timber Buildings, Motorhomes, Caravans, Boats and Many More!**

**As the leading distributor of YBS Insulation Multifoil Insulation we offer technical support for all projects including U-Value Calculations for Building Control – 7 Days a Week!**

**Our Reflective Multifoil Insulation Solutions are designed to replace expensive, hard to install traditional products such as Kingspan or Celotex. Multifoil Insulation products are also extremely thin while providing a high level of performance.**

**We supply a wide range of products suitable for all applications such as YBS SuperQuilt, BreatherQuilt, EcoQuilt Expert, EcoTec Floor-Foam, EcoAirtec Double, EcoLoft Non-Itch & More.**

**Multifoils Direct provide the Lowest Trade Prices within Europe and offer Free Next Working Day Delivery to the UK Mainland. We also offer discounted carriage rates throughout Europe.**

**You can request a Call Me Back below and one of our dedicated team members will call you within one hour, alternatively technical queries can be sent via email to [technical@multifoilsdirect.co.uk](mailto:technical@multifoilsdirect.co.uk)**

**You can also use our Free and Easy to use Online U-Value Calculator which has over 1,000 certified applications for use with Building Control. This too can be found below.**



**Call Me Back**



**U-Value Calculator**



**[sales@multifoils.direct.co.uk](mailto:sales@multifoils.direct.co.uk) - 0114 323 0045**

# Product Links and Data Sheets

## **a) Under Rafter / Pitched Roofs - Click Here!**

<https://www.multifoilsdirect.co.uk/product/ybs-superquilt/>

[SuperQuilt Fitting and Data Sheet](#) 

---

## **b) Over Rafters / Pitched Roofs - Click Here!**

<https://www.multifoilsdirect.co.uk/product/ybs-breatherquilt/>

[BreatherQuilt Fitting and Data Sheet](#) 

---

## **c) Flat Roofs - Click Here!**

<https://www.multifoilsdirect.co.uk/product/ybs-superquilt/>

[SuperQuilt Fitting and Data Sheet](#) 

---

## **d) Conservatory Roofs - Click Here!**

<https://www.multifoilsdirect.co.uk/product/conservatory-insulation-kit/>

---

## **e) Solid Walls - Click Here!**

<https://www.multifoilsdirect.co.uk/product/ybs-superquilt/>

[SuperQuilt Fitting and Data Sheet](#) 

---

## **f) Timber Frame Walls - Click Here!**

<https://www.multifoilsdirect.co.uk/product/timber-frame-multifoil-insulation-kit/>

[Timber Frame Insulation Kit Fitting Guide](#) 

---

## **g) Wooden and Concrete Floors - Click Here!**

<https://www.multifoilsdirect.co.uk/product/ecotec-floor-foam/>

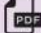
[EcoTec FloorFoam Insulation Kit Fitting Guide](#) 

# Product Links and Data Sheets

## h) Suspended Timber Floors - [Click Here!](#)

<https://www.multifoilsdirect.co.uk/product/ecoquilt-expert-the-superquilt-alternative/>

<https://www.multifoilsdirect.co.uk/product/ybs-superquilt/>

[SuperQuilt Fitting and Data Sheet](#) 

## i) Timber Garden Buildings - [Click Here!](#)

<https://www.multifoilsdirect.co.uk/product/ecopro-shed-insulation-kit/>

[EcoPro and EcoTec Shed Insulation Data Sheet](#) 

## j) Caravan & Motorhomes - [Click Here!](#)

<https://www.multifoilsdirect.co.uk/product/ecopro-caravan-multifoil-insulation-kit/>

## k) Radiators & Convectors - [Click Here!](#)

<https://www.multifoilsdirect.co.uk/product/ecotec-radiator-insulation-kit/>

**Free fixing item of  
your choice**



**When spending  
over £500 + VAT**

**Free Next Day Delivery  
to the UK Mainland! \***



**Discounted Delivery to  
Offshore UK and Europe!**

**MultifoilsDirect**  
Experts in Foil Insulation Solutions