

ECO AIRTEC-DOUBLE

High Performance Multi-Purpose Insulation

- ✓ True Aluminium Foil Outer layers
- ✓ Available in 4 different Roll Sizes
- ✓ Equivalent to 55mm of Polystyrene
- ✓ Thin, Flexible and Easy to Install
- ✓ Equivalent to 60mm of Fibre Glass

**Reflects 95% of
Radiant Energy**



Designed For:

- Roofs
- Walls
- Floors
- Packaging
- Motor Homes
- Conservatories
- Static Caravans
- Windows & Doors
- Timber Garden Buildings
- Agricultural Buildings
- Many More

 **MADE IN
BRITAIN**

Order Online at the Lowest Trade Rates
with Free Next Working Day Delivery!

MultifoilsDirect
Experts in Foil Insulation Solutions

ECO AIRTEC-DOUBLE

High Performance Multi-Purpose Insulation

Roofs

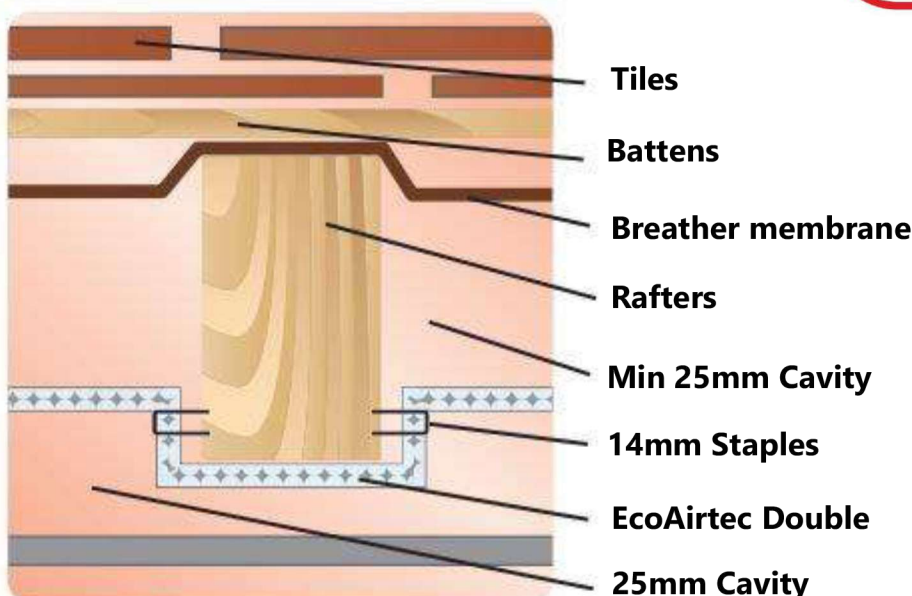
**Including Pitched Roofs, Flat Roofs,
Conservatory Roofs and Garden Building Roofs**

Installation:

- Roll out EcoAirtec Double starting at one side of the roof. Staple at 300mm intervals ensuring that the EcoAirtec is either a) pulled taught if installing a batten below. b) recessing EcoAirtec 25mm into the rafters (As per detail below).
- Once the whole of the rafters are covered we recommend applying 75mm ThermaSeal Foil Tape along all overlaps (50mm) and the perimeter to create a complete seal. This will help the material act as a high performing Vapour Control Layer.
- If EcoAirtec is being installed taught/flat layer we recommend fixing a 25mm counter batten before any internal boarding is installed.



**Reflects 95% of
Radiant Energy**



Order Online at the Lowest Trade Rates
with Free Next Working Day Delivery!

MultifoilsDirect
Experts in Foil Insulation Solutions

ECO AIRTEC-DOUBLE

High Performance Multi-Purpose Insulation

Walls

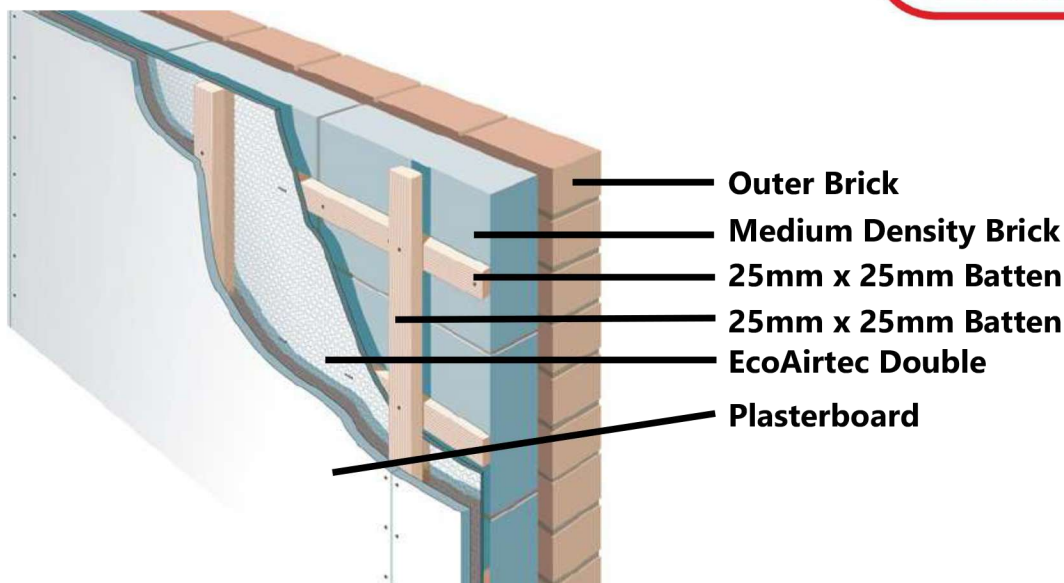
Including Stud Walls, Solid Brick Walls, Timber Frames, Garage Walls & Garden Building Walls.

Installation:

- EcoAirtec can either be installed directly onto the solid wall or by installing a 25mm batten before applying the EcoAirtec. It is recommended to have an air space either side as this will help the foil to reflect properly.
- EcoAirtec is stapled at 300mm intervals and fully taped and sealed using ThermaSeal Foil Tape. This will allow the product to act as a high performing Vapour Control Layer.
- When using a batten either side we recommend the secondary batten to be installed vertically.
- If you are insulating a Garden Building that already has studwork you can staple the EcoAirtec directly to these before cross battening.



**Reflects 95% of
Radiant Energy**



Order Online at the Lowest Trade Rates
with Free Next Working Day Delivery!

MultifoilsDirect
Experts in Foil Insulation Solutions

ECO AIRTEC-DOUBLE

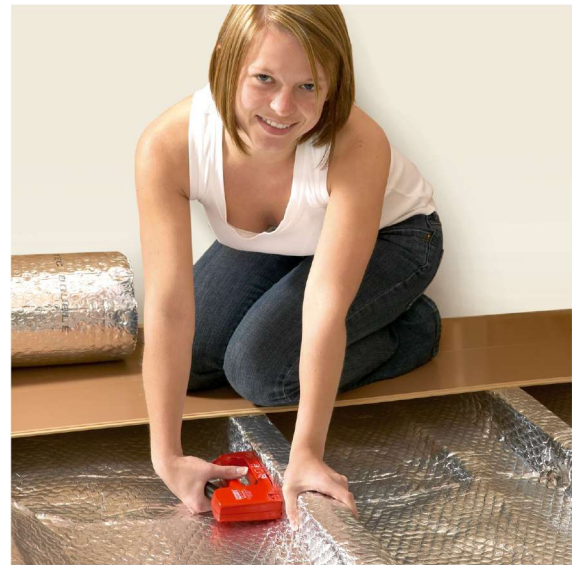
High Performance Multi-Purpose Insulation

Floors

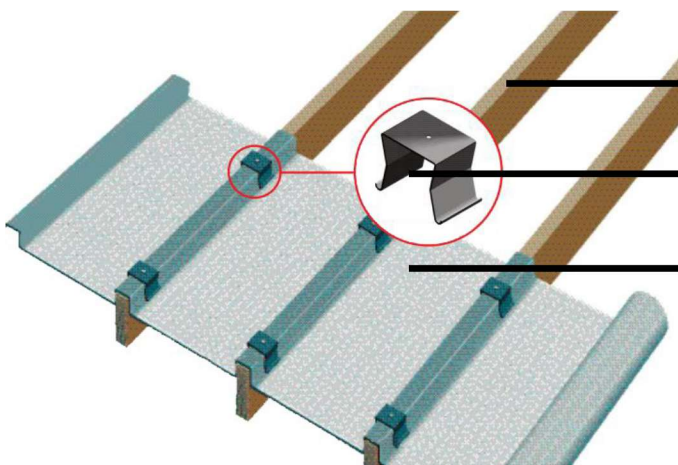
**For Floating Floors, Solid Floors, Suspended Timber Floors
& Crawl Space Floors**

Installation:

- EcoAirtec can be installed over the wooden floor joists. You can install this as a taught layer and use a 25mm batten before floor boarding or by recessing the EcoAirtec using Saddle Clips or by simply stapling into place.
- Start by laying the EcoAirtec over all of your joists and recessing the material 25mm into your joist (Please allow for 25mm air space either side of the material). Then staple to the side and on top of the joist at 300mm intervals.
- Then begin to tape and seal the perimeter with ThermaSeal Foil Tape, leaving the overlaps (50mm) un-taped. This helps the timbers to breathe.
- Saddle Clips are designed to fit 50mm wide joists and recess the EcoAirtec by 50mm. We recommend 100mm joists or more for this method. If your Joists are smaller you can recess 25mm using staples at 300mm intervals.



**Reflects 95% of
Radiant Energy**



Wooden Joists of 50mm or more

54mm x 50mm Saddle Clips

EcoAirtec Double

Order Online at the Lowest Trade Rates
with Free Next Working Day Delivery!

MultifoilsDirect
Experts in Foil Insulation Solutions

ECO AIRTEC-DOUBLE

High Performance Multi-Purpose Insulation

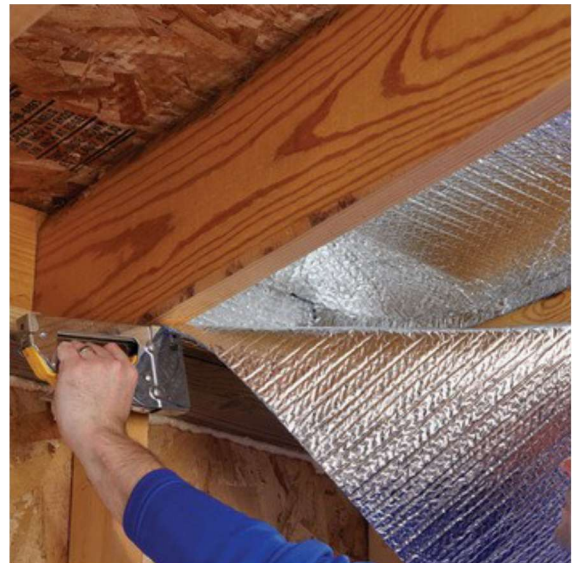
Floors

**For Floating Floors, Solid Floors, Suspended Timber Floors
& Crawl Space Floors**

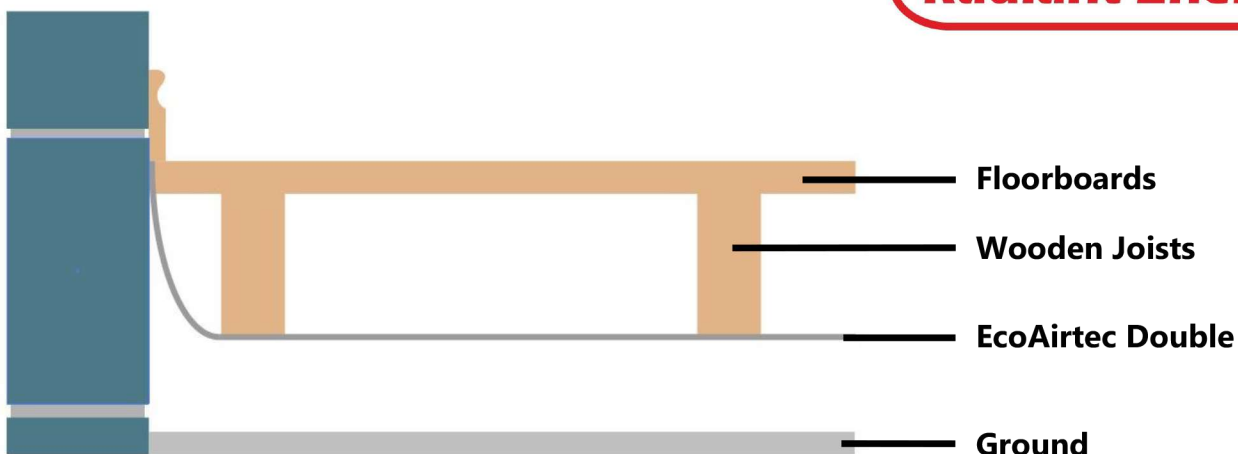
Perfect for underneath Static Caravans!

Installation:

- EcoAirtec can be stapled directly to the underside of your wooden joists to help prevent cold from rising into your home.
- Start by rolling out the insulation along all the joists and cut to the desired length using a sharp knife or Multifoil Scissors.
- Staple EcoAirtec at 300mm intervals making sure the insulation is pulled taught.
- Tape and seal the perimeter of the EcoAirtec, leaving the 50mm overlaps un-taped. This will help the timbers to breathe slightly and help any trapped moisture to escape.



**Reflects 95% of
Radiant Energy**



Order Online at the Lowest Trade Rates
with Free Next Working Day Delivery!

MultifoilsDirect
Experts in Foil Insulation Solutions

ECO AIRTEC-DOUBLE

High Performance Multi-Purpose Insulation

Packaging

Pallet Covers

EcoAirtec can be used to thermally wrap temperature sensitive goods on a pallet.

EcoAirtec also helps protect the goods as the insulation is very robust.

The True aluminium foil helps reflect back cold into the goods, keeping the goods fresh or frozen during transportation.

We recommend fully and sealing each corner with ThermaSeal Foil Tape to ensure that no warm air can enter the pallet.



Container Liners

EcoAirtec is commonly used to insulate the inside of containers for transportation and storage.

Make sure the container is completely free of any dust by wiping down the roof with a damp cloth.

We recommend using ThermaSeal Double Sided Tape to fix the insulation onto the Roof, Walls, Doors and the Floor.

Once the insulation is in place you can then fully tape and seal all the overlaps, cuttings and joints using ThermaSeal Foil Tape.

This will also then act as a vapour barrier ensuring your shipping container is completely moisture free.

**Reflects 95% of
Radiant Energy**



**Order Online at the Lowest Trade Rates
with Free Next Working Day Delivery!**

MultifoilsDirect
Experts in Foil Insulation Solutions

ECO AIRTEC-DOUBLE

High Performance Multi-Purpose Insulation

Motor Homes & Vans

EcoAirtec is commonly used on the Roof, Walls and Floors of motor homes and van conversions.

This can be installed directly onto the metal of the van or by installing 25mm wooden battens before stapling to these. Thinner battens can be used to reduce the loss of space.

Once the whole of the interior of the van is covered we recommend taping and sealing all the perimeter and overlaps using ThermaSeal Foil Tape.

If boarding internally we recommend counter battening, this allowing an air gap either side of EcoAirtec Double.



Windows

EcoAirtec can be placed over windows during winter months to help prevent cold from entering your home, motor home, greenhouse or doors.

In the summer months this also prevents hot air from entering through your windows.

This can be applied using a double sided tape or by using a Velcro if you are regularly removing the insulation.

**Reflects 95% of
Radiant Energy**

Order Online at the Lowest Trade Rates
with Free Next Working Day Delivery!

MultifoilsDirect
Experts in Foil Insulation Solutions

ECO AIRTEC-DOUBLE

High Performance Multi-Purpose Insulation

Product Information

Roll Sizes:

- 1050mm x 25m (26.25m²)
- 1050mm x 50m (52.5m²)
- 1200mm x 25m (30m²)
- 1500mm x 25m (37.5m²)



	ECO AIRTEC-DOUBLE
Thermal Resistance	
Bubble:	0.124m ² K/W
Cavity (x2):	0.665m ² K/W
Total Thermal Resistance:	1.454m²K/W
Thickness	4mm
Weight Per m ²	200 Grams
Water Vapour Resistance:	600MNs/g
Emissivity	0.05
Environmental:	CFC & HCFC Free

Tel: 0114 323 0045

WWW.MULTIFOILSDIRECT.CO.UK

Order Online at the Lowest Trade Rates
with Free Next Working Day Delivery!

MultifoilsDirect
Experts in Foil Insulation Solutions